

**Test:** (F) Primary 3 - Term 2 (SA1) Science (ACS)

**Points:** 56 points

**Name:** \_\_\_\_\_

**Score:** \_\_\_\_\_

**Date:** \_\_\_\_\_

**Signature:** \_\_\_\_\_

Select multiple choice answers with a cross or tick:

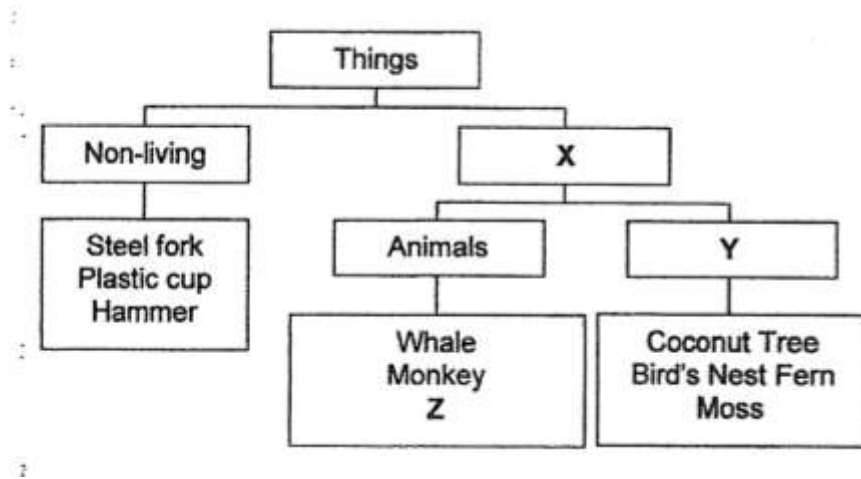
Only select one answer

Can select multiple answers

Booklet A (56 marks)

For each question from 1 to 28, four options are given. One of them is the correct answer.

The classification chart below shows how some things were classified according to certain characteristics.



Which of the following clearly represents letters X, Y and Z?

	X	Y	Z
(1)	Living	Can reproduce	Water lily
(2)	Cannot die	Plants	Banana Tree
(3)	Living	Plants	Shark
(4)	Cannot die	Can reproduce	Cat

- A) 1
- B) 2
- C) 3
- D) 4

**Question 2 of 65**

Primary 3 Science (Term 2) 2 pts

Evelyn has classified some objects as shown below.

Group A	Group B
White board	Skipping ropes
Students	Hockey sticks
Chairs	Tennis balls

Which of the following are the correct headings for Group A and Group B?

	Group A	Group B
(1)	Found in classroom	Found in PE store room
(2)	Non-living	Living
(3)	Found in living room	Found in toilet
(4)	Living	Non-living

- A) 1
- B) 2
- C) 3
- D) 4

**Question 3 of 65**

Primary 3 Science (Term 2) 2 pts

Study the two groups of things below.

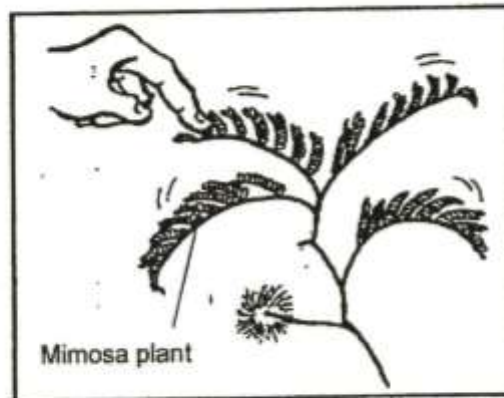
Group P	Group Q
Mushroom	Hibiscus plant
Bacteria	Rose plant
Rabbit	Moss

Which one of the following is true about the two groups of things?

	Group P	Group Q
(1)	Can grow	Cannot grow
(2)	Can reproduce	Cannot reproduce
(3)	Cannot make its own food	Can make its own food
(4)	Cannot respond to changes around them	Can respond to changes around them

- A) 1
- B) 2
- C) 3
- D) 4

Peter went to the field and saw some mimosa plants. After he had gently touched the leaves of the mimosa plant, the leaves folded inwards immediately.



Which of the following characteristics is shown when the leaves of the mimosa plant folded inwards?

- A) Living things are shy.
- B) Living things can die.
- C) Living things can respond to changes around them .
- D) Living things can move from one place to another by themselves.

Some animals are grouped as shown in the classification table below.

Group R	Group P
Horse	Owl
Sheep	Snake
Lion	Seal

These animals are grouped according to \_\_\_\_\_.

- A) what they eat
- B) where they live
- C) their outer covering
- D) how they move about

The table below shows the characteristics of things A and B.

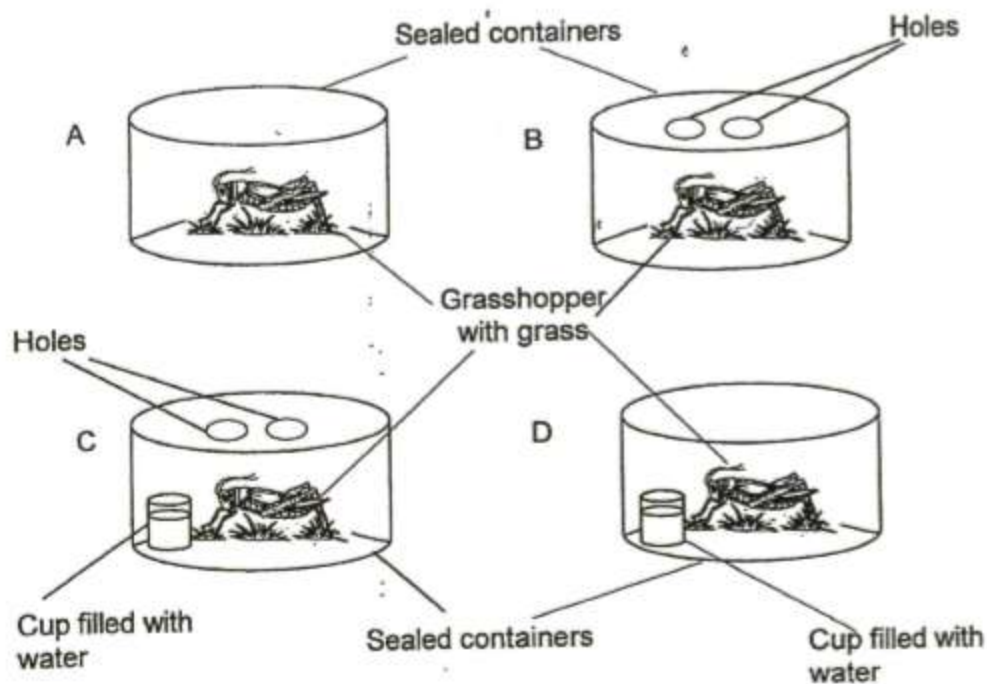
Things	Does it need air?	Can it grow?	Can it fly?
A	No	No	Yes
B	Yes	Yes	Yes

Which one of the following correctly identifies A and B?

	A	B
(1)	Bird	Airplane
(2)	Helicopter	Airplane
(3)	Butterfly	Helicopter
(4)	Airplane	Bird

- A) 1
- B) 2
- C) 3
- D) 4

Peter wants to conduct an experiment to find out if living things need water to survive.



Which of the two set-ups above should he use to conduct his experiment?

- A) A and B
- B) A and C
- C) B and C
- D) B and D

Which one of the following examples does not show the characteristics of a living thing?

- A) A dog has given birth to 5 puppies.
- B) A boy is now 5 cm taller than he was last year.
- C) A school flag is flapping when the wind blows.
- D) A girl moved her hand away after touching a hot kettle.

**Question 9 of 65**

Primary 3 Science (Term 2) 2 pts

Remus has written a riddle that describes a plant. Read the riddle below carefully.

"I grow on a tree.

I cannot bear fruits.

I reproduce from spores. What am I?"

The riddle best describes a \_\_\_\_\_.

---

- A) Mango plant
- B) Cactus Plant
- C) Balsam plant
- D) Staghorn fern

**Question 10 of 65**

Primary 3 Science (Term 2) 2 pts

How is the bird's nest fern different from the rose plant?



Bird's nest fern



Rose plant

- A It has leaves.
- B It reproduces from spores.
- C It cannot make its own food.

- 
- A) A only
  - B) B only
  - C) A and C only
  - D) B and C only

Mrs Kang told her students to observe some plants. She then asked the students to find out where the spores were found. Four students have given their responses as shown in the table below.



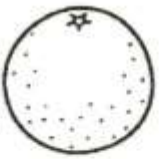



Whose response is correct?

	Name of student	Where spores are found
(1)	Alan	In the roots
(2)	Beth	On the stem
(3)	Cathy	On the leaf
(4)	Daniel	On the fruit

- 
- A) 1
- B) 2
- C) 3
- D) 4



Some fruits have been classified in the following groups.

Group A	Group B
 <p data-bbox="550 481 646 515">Fruit A</p>	 <p data-bbox="1037 459 1133 492">Fruit E</p>
 <p data-bbox="550 705 646 739">Fruit B</p>	 <p data-bbox="1037 672 1133 705">Fruit F</p>
 <p data-bbox="550 929 646 963">Fruit C</p>	 <p data-bbox="1037 929 1133 963">Fruit G</p>

Based on your observation, which fruit was classified wrongly?

- A) A  
 B) C  
 C) E  
 D) G

Ben, Helen, Ray and Janet were having a discussion on flowering and non-flowering plants and made the following statements.

Ben: Flowering plants only grow on land.

Helen: Flowering plants can reproduce by seeds.

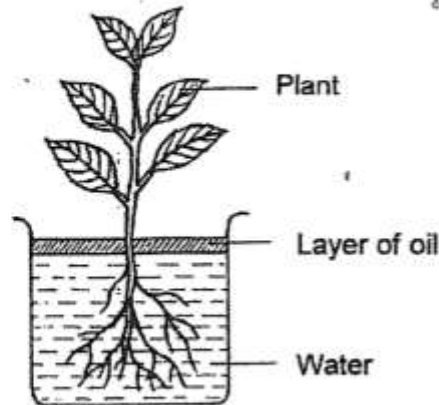
Ray: Non-flowering plants cannot produce fruits.

Janet: Non-flowering plants cannot respond to changes around them.

Whose statements are correct?

- A) Ben and Ray  
 B) Ben and Janet  
 C) Helen and Ray  
 D) Helen and Janet

Kenneth placed a plant in a beaker of water and left it near a window. He then added a layer of oil on the surface of the water.



What did Kenneth observe after 5 days?

- A) The plant wilted and died.
- B) The plant lost all its roots.
- C) The water level in the beaker decreased.
- D) The water level in the beaker remained the same.

One morning, Leroy observed that the healthy banana tree in his garden did not have any flowers. What could be the most likely possible reason for his observation?

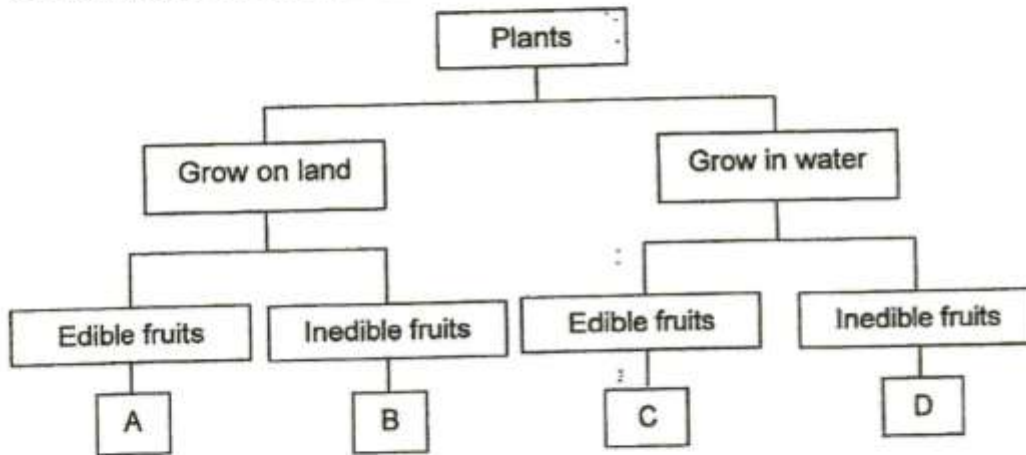


- A) The banana plant is a non-flowering plant.
- B) The banana plant only produces fruits but not flowers
- C) The banana plant has flowers that only appear at night.
- D) The banana plant only bears flower at a specific time of the year.

The following table gives information on four plants, W, X, Y and Z, based on two characteristics. A tick (✓) shows that the plant has the characteristic.

Characteristics	W	X	Y	Z
Has fruits that are edible		✓		✓
Grows on land	✓			✓

From the information above, in which group, A, B, C or D, do plants W and Z belong in the following classification chart?



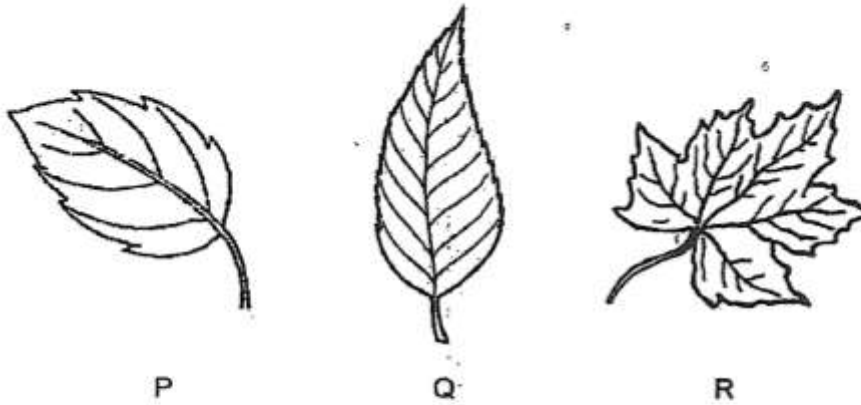
	Plant W	Plant Z
(1)	D	B
(2)	B	A
(3)	C	D
(4)	A	C

- A) 1
- B) 2
- C) 3
- D) 4

Which of the following statements about flowering plants is true?

- A) Only plants with flowers can make their own food
- B) Only plants with green leaves can make their own food.
- C) Plants with leaves of any colours can make their own food.
- D) Plants that reproduce from spores cannot make their own food.

The diagram below shows three leaves, P, Q and R.

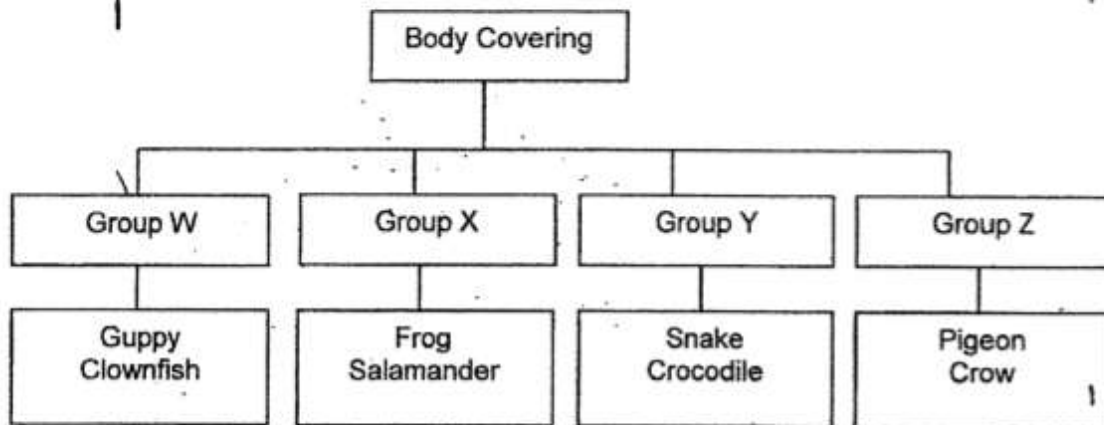


Based on your observation, which of the following description(s) of the leaves is/are correct?

- A They are palm-shaped.
- B They are heart-shaped.
- C They have jagged edges.
- D They have smooth edges.

- 
- A) C only
  - B) A and C only
  - C) A, B and D only
  - D) B, C and D only

Study the classification chart below.



In which group does a toad belong to?

- A) Group W
- B) Group X
- C) Group Y
- D) Group Z

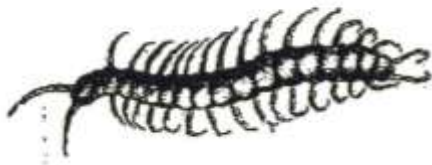
Which of the following is not an insect?

---

A)



B)



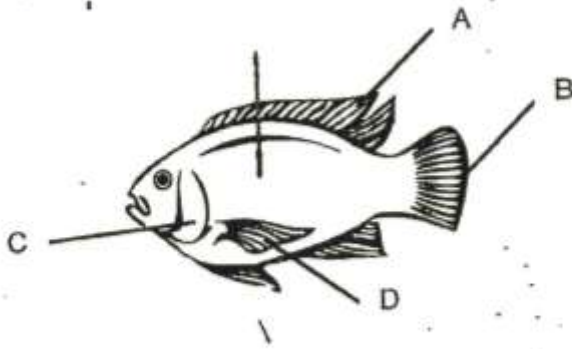
C)



D)



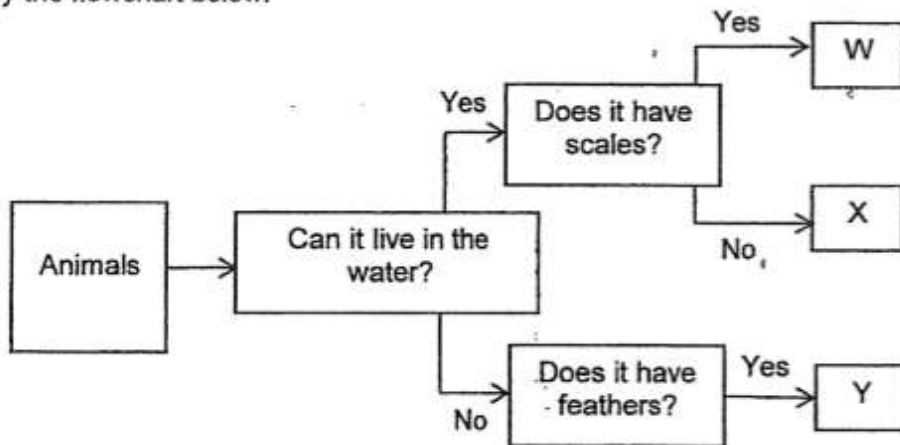
Study the organism below.



Which of the parts shown above help the organism to swim?

- 
- A) B and C only
  - B) A and D only
  - C) A, B and D only
  - D) All of the above

Study the flowchart below.



Which one of the following correctly represents the group of animals W,X and Y belong to?

	Bird	Amphibian	Fish
(1)	Y	X	W
(2)	W	Y	X
(3)	Y	W	X
(4)	X	Y	W

- A) 1
- B) 2
- C) 3
- D) 4



The picture shows an ostrich.



- A It is a bird as it has a beak.
- B It is a bird as it has feathers.
- C It is not a bird as it cannot fly.
- D It is not a bird as it can run very fast.

Which of the above statements are true of an ostrich?

- 
- A) D only
  - B) A and B only
  - C) C and D only
  - D) A, B and C only

Several children observed Animal X and made the following statements.

Andy: It lays eggs.

Alan: It has a long tail.

John: It has moist skin.

Mark: It can also breathe with lungs.

Which animal group does Animal X most likely belong to?

- 
- A) Fish
  - B) Mammal
  - C) Reptile
  - D) Amphibian

Study the animals below.



House Lizard

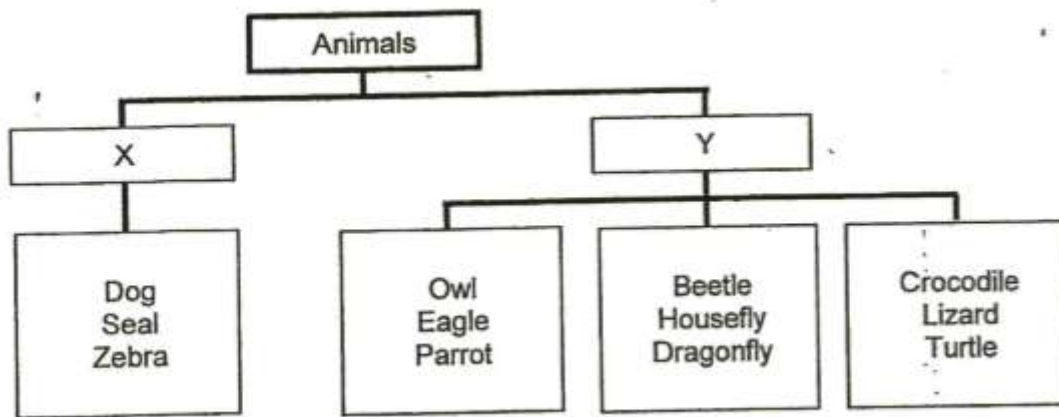


Frog

Which of the following is true for house lizard but **false** for frog?

- 
- A) Can live in water only.
  - B) Reproduce by laying eggs.
  - C) Have dry skin covered with scales.
  - D) Have a constant body temperature.

Study the classification chart below.



Which of the following can be the sub-headings X and Y be?

	X	Y
A	Give birth to young alive	Lay eggs
B	Have an outer covering of hair	Do not have an outer covering of hair
C	Have a constant body temperature	Do not have a constant body temperature
D	Suckle their young	Do not suckle their young

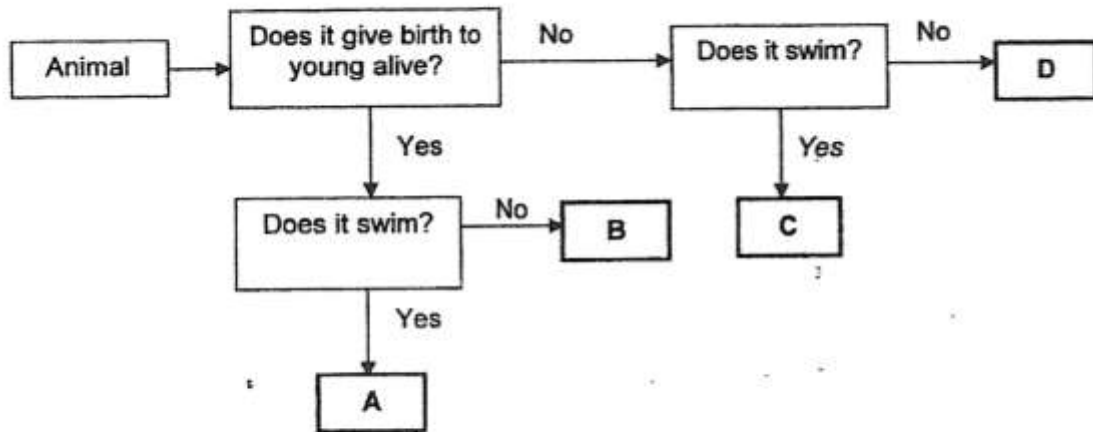
- A) B and C only
- B) C and D only
- C) A, B and D only
- D) All of the above

Question 27 of 65

Jason found an animal in a garden and he wanted to find out if it is an insect. What must he do to ensure that it is an insect?

- A) Measure the length of the animal.
- B) Find out whether the animal has wings.
- C) Observe whether the animal lays eggs.
- D) Find out the number of body parts the animal has.

Study the flow chart below.



Which of the following letters represent a penguin?

- A) A
- B) B
- C) C
- D) D

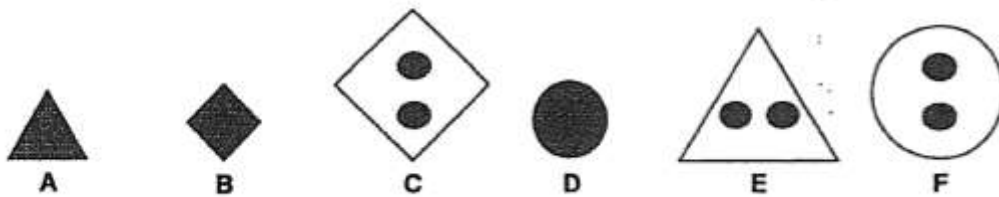
**Booklet B**

For questions 29 to 41, write your answers in a paper.

*This question is designed for extended answers that parent/ teacher will have to assign and guide child to attempt after the test has been completed.*

*Grading: This question type is not graded on this system and will not affect the final score as it was designed in such a way that it requires manual assistance.*

Mrs Lee gave six figures, A, B, C, D, E and F, to Jerry as shown below.



State one characteristic that Jerry could use to classify the 6 figures into 2 groups so that there is an equal number of figures in each group.

---

Question 30 of 65

Mrs Lee asked Jerry to use another characteristic to **regroup** the six figures into **2 groups** with an **equal number** of figures in each group. How could Jerry regroup the six figures? Write the letters (A, B, C, D, E and F) in the boxes provided. [

Group 1	Group 2
<input type="text"/>	<input type="text"/>
<input type="text"/>	<input type="text"/>
<input type="text"/>	<input type="text"/>

(With reference to previous question)

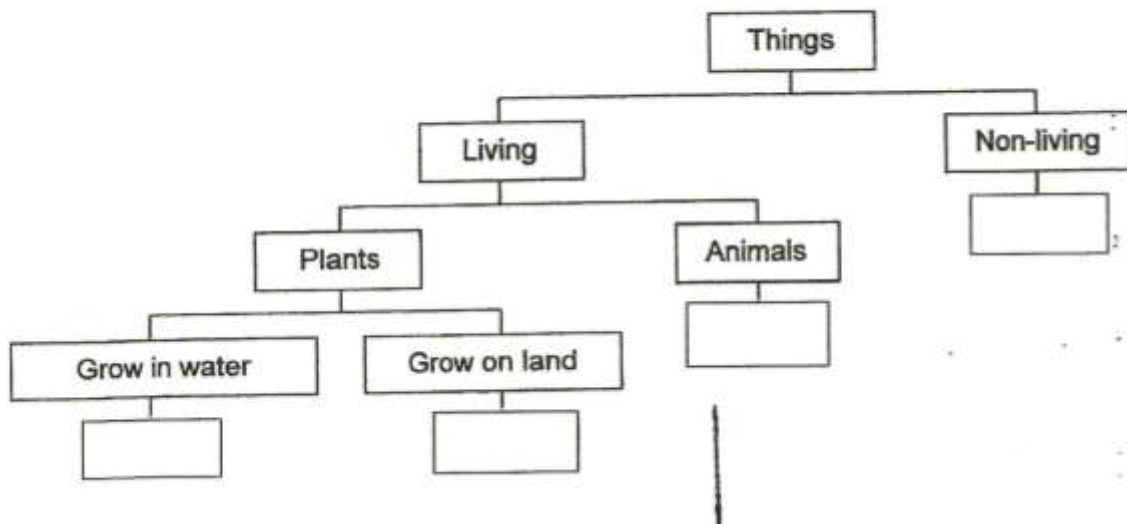
---

(With

The table below gives information about four things based on some characteristics. A tick (✓) shows that the thing has the characteristic.

Characteristic	Thing			
	P	Q	R	S
Needs air, food and water to survive	✓	✓		✓
Can be found inside the pond	✓		✓	✓
Can reproduce and can die	✓	✓		✓
Can make its own food	✓	✓		

Fill in the boxes with the letter P, Q, R or S in the classification table below.



With reference to the previous question, name a thing that has the same characteristics as Q.

---

William observed and classified some things into 2 groups as shown in the table below.

Group X	Group Y
Cockroach	Fork
Elephant	Spoon
Mushroom	Sharpener
Fern	Eraser

Based on the information above, answer the following questions:

Give a suitable headings for Group X and Group Y.

Group X: \_\_\_\_\_

Group Y: \_\_\_\_\_

Classify the things in Group X in the table below based on the given headings.

Mammal	Insect	Fungi	Plant

**Question 35 of 65**

Primary 3 Science (Term 2) 0 pts

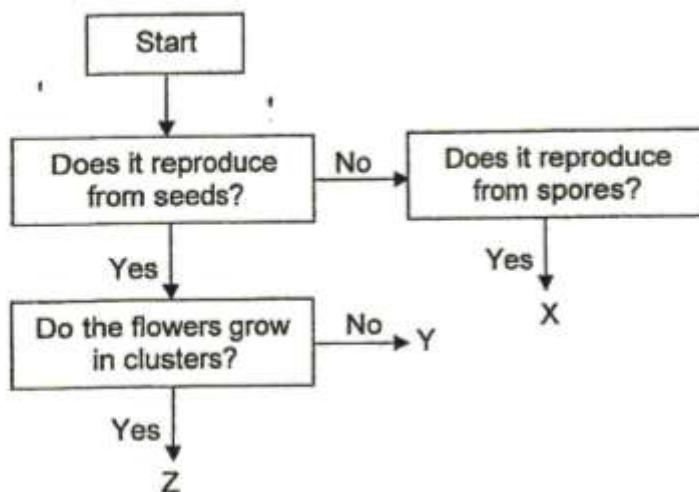
Help William to classify the objects in Group Y into 2 groups in the table below based on the headings provided.

Found in a pencil case	Found in the kitchen

**Question 36 of 65**

Primary 3 Science (Term 2) 0 pts

Study the flow chart which shows the characteristics of some plants.



Based on the flow chart, state all the characteristics of Z.

**Question 37 of 65**

Primary 3 Science (Term 2) 0 pts

Based on the flow chart, state a difference between X and Y.



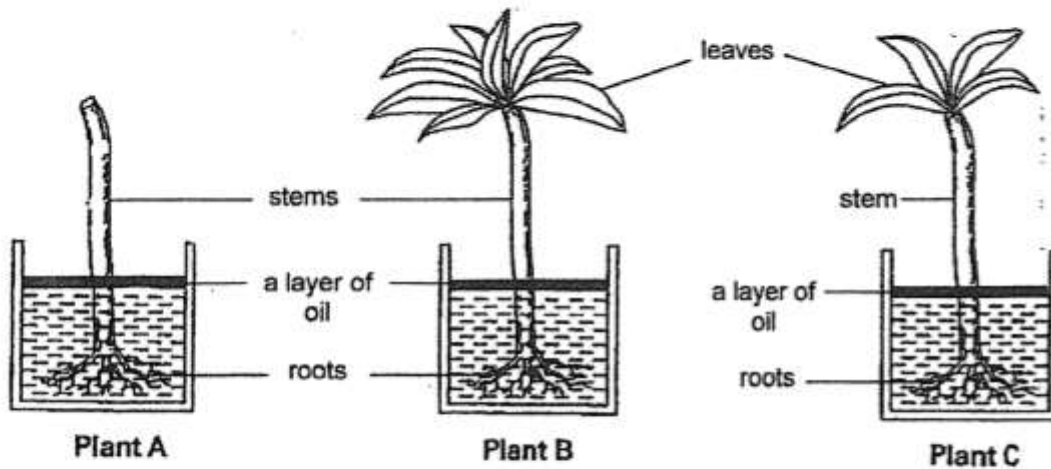
The diagram below shows an Ixora plant.



Which letter, X, Y or Z, in the flow chart above represents the Ixora plant?  
(with reference to the previous flow chart)

---

James used three similar plants, A, B and C, to conduct an experiment. He removed all the leaves from Plant A, and some leaves from Plant C. He then placed each plant in a container filled with 700 ml of water as shown in the diagram below.



After 3 days, James measured the amount of the water in each container. The table below shows the amount of water left in each container.

Amount of water left after 3 days (ml)		
A	B	C
695	520	580

Based on the results in the table, state if each of the following statement is 'True', 'False' or 'Not possible to tell' by putting a tick in the correct box.

	Statement	True	False	Not possible to tell
(i)	Plant C took in the greatest amount of water.			
(ii)	Plant A took in less water than plant B.			

**Question 40 of 65**

Primary 3 Science (Term 2)

0 pts

After 1 week, James recorded his observations of the three plants in the table below.

Plants	Observations
A	It died.
B	All the leaves are still green and healthy.
C	Only a few leaves are still green and healthy.

Why did plant B grow the best?

---

**Question 41 of 65**

Primary 3 Science (Term 2)

0 pts

The table below shows the different conditions in his experiment. Put a tick in the correct box(es) to indicate the condition(s) he should keep the same in order to carry out a fair experiment.

Conditions	Keep the same
Amount of roots	<input type="checkbox"/>
Type of plant used	<input type="checkbox"/>
Location of the plants	<input type="checkbox"/>
Number of leaves on the plant	<input type="checkbox"/>

---

Study the two fruits based on the characteristics given in the table below.



Papaya



Lychee

Compare the two fruits based on the characteristics given in the table below.

Characteristics	Papaya	Lychee
Texture of outer covering		
Number of seeds		

The diagram below shows a watermelon.



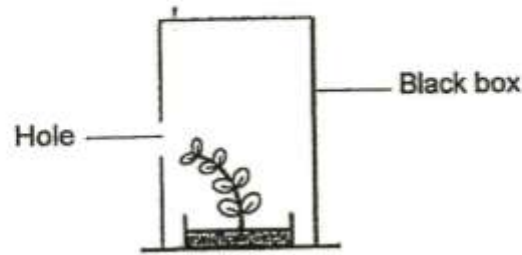
Watermelon

Which fruit is the watermelon similar to, papaya or lychee? Explain why.

**Question 44 of 65**

Primary 3 Science (Term 2) 0 pts

Jason placed a plant which was growing upright in a black box that has a hole on the left side. After 2 days, he noticed that the plant grew towards the left as shown in the diagram below.



Which characteristics of living things does the experiment show?

---

**Question 45 of 65**

Primary 3 Science (Term 2) 0 pts

With reference to the previous question, draw how the same plant will most likely look after a few days when he placed it in a black box with a hole on the right.

---

**Question 46 of 65**

Primary 3 Science (Term 2) 0 pts

Nathan planted a seed in a pot with soil and placed it near the window in his room to receive sunlight. He then observed the seed growing into a plant over 8 weeks. He measured and recorded the height of the plant over 8 weeks in the table as shown below.

Week	Height (cm)
1	2
2	3
3	7
4	10
5	13
6	?
7	19
8	22

Based on the results in the table, what would be the height of the plant in week 6?

The height of the plant in week 6 would be \_\_\_\_\_ cm.

---

**Question 47 of 65**

Primary 3 Science (Term 2) 0 pts

With reference to the previous question, state the characteristics of living thing that the plant shows.

---

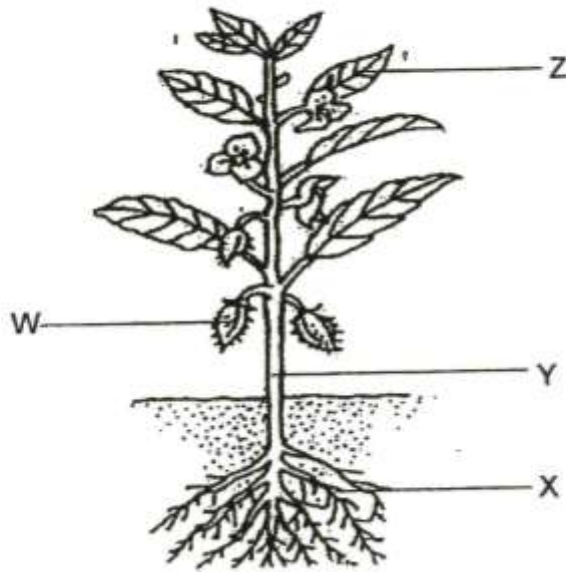
**Question 48 of 65**

Primary 3 Science (Term 2) 0 pts

After week 8, Nathan went on a trip with his entire family for 2 weeks and there was no one at home during that time. When Nathan returned home, he observed that the plant withered and died at the same location. What could be a likely reason for the plant to die?

---

The diagram below shows a plant with different parts, W, X, Y and Z.

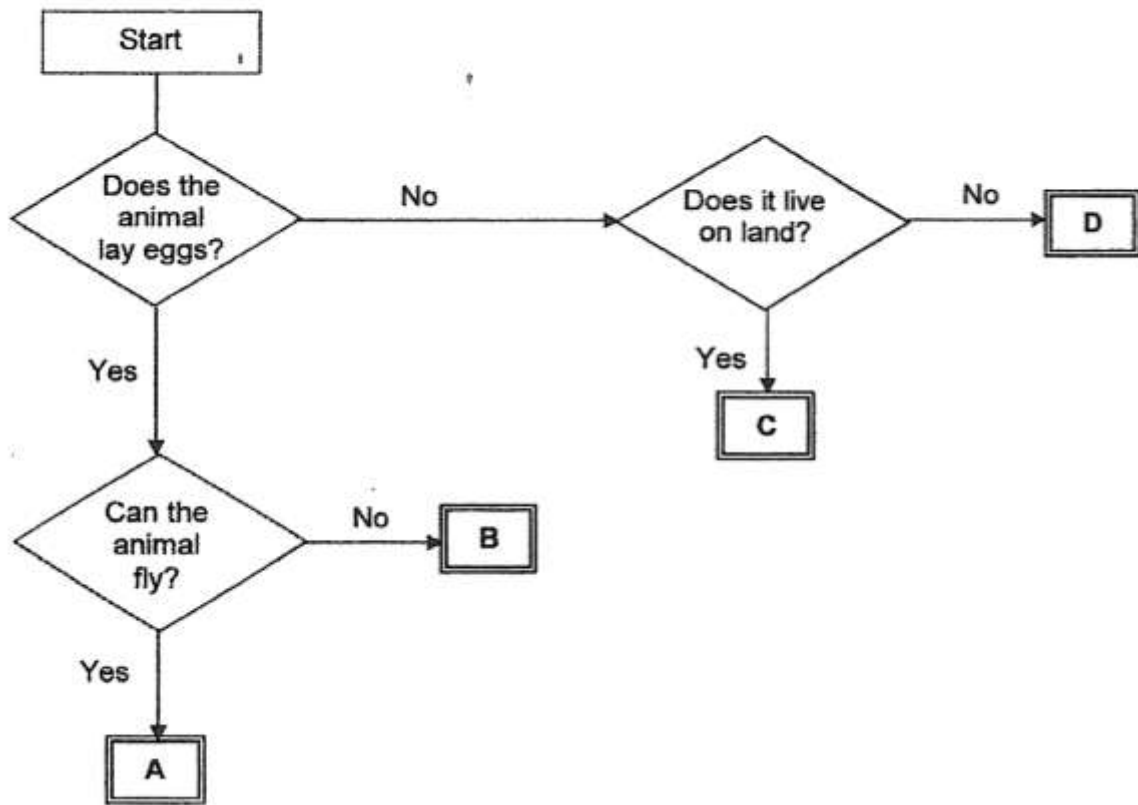


Name the parts of the plant in the table below.

Letter	Name of the part of the plant
W	
X	
Y	
Z	

Why are plants important to the survival of other living things?

Study the flow chart on animals A, B, C and D.



Based on the flow chart, which animal A, B, C, D is most likely an Eagle?

---

Based on the flow chart, state two characteristics of Animal D.

---

Give an example of animal B.

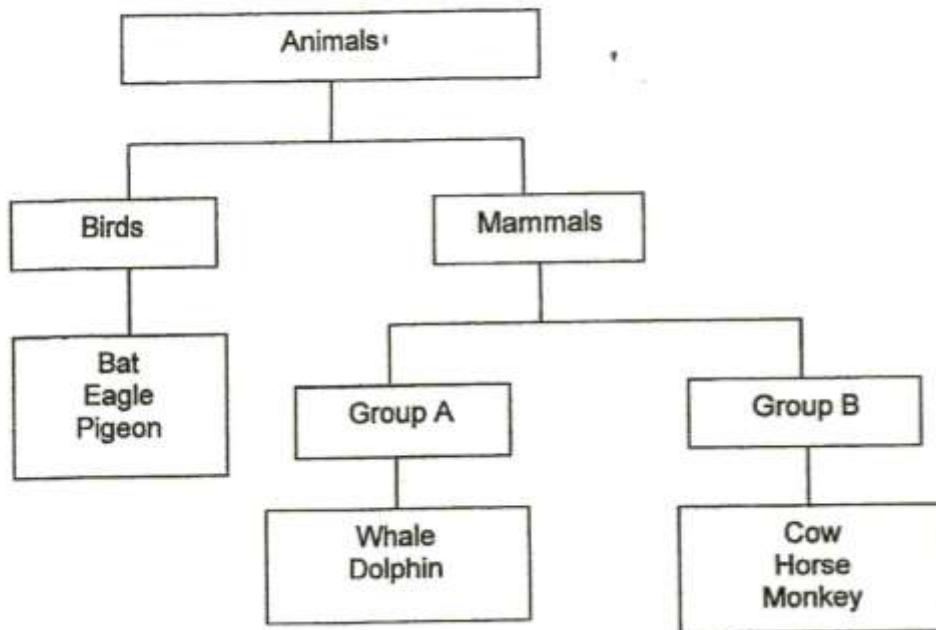
---



**Question 54 of 65**

Primary 3 Science (Term 2) 0 pts

Study the classification chart given below.



Which one of the animals is classified wrongly?

---

**Question 55 of 65**

Primary 3 Science (Term 2) 0 pts

With reference to the previous question, explain clearly based on its characteristics why the animal you chose in (a) is classified wrongly? [Do not compare the animal group they belong to]

---

**Question 56 of 65**

Primary 3 Science (Term 2) 0 pts

Give suitable sub-headings for Group A and Group B.

Group A : \_\_\_\_\_

Group B : \_\_\_\_\_

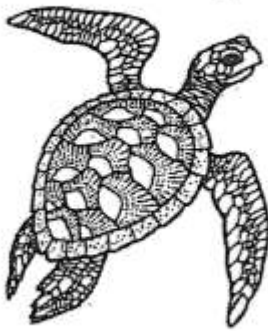
---

---

**Question 57 of 65**

Primary 3 Science (Term 2) 0 pts

Observe animals E and F carefully.



**Animal E**



**Animal F**

How do animal E and F reproduce?

---

**Question 58 of 65**

Primary 3 Science (Term 2) 0 pts

With reference to the previous question, based on your observation, state one similarity between animal E and animal F.

---

**Question 59 of 65**

Primary 3 Science (Term 2) 0 pts

With reference to the previous question, state one difference between animal E and animal F.

---

**Question 60 of 65**

Primary 3 Science (Term 2) 0 pts

Study Animal Y below.



**Animal Y**

Based on your observation, which animal group does Animal Y belong to?

---

**Question 61 of 65**

Primary 3 Science (Term 2) 0 pts

State two reasons for your answer in the previous question.

---

**Question 62 of 65**

Primary 3 Science (Term 2) 0 pts

With reference to the previous question, name the outer covering of Animal Y. State its function.

---

**Question 63 of 65**

Primary 3 Science (Term 2) 0 pts

The diagram below shows a spider.



Does the spider belong to the same animal group as Animal Y?  
Give a reason for your answer.

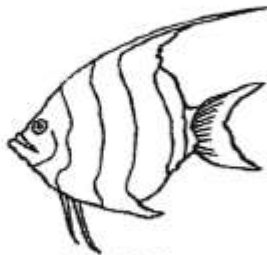
\_\_\_\_\_ (with reference to the  
previous question)

---

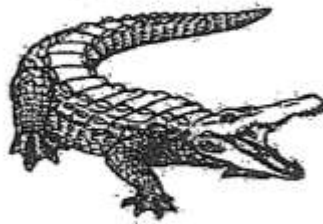
**Question 64 of 65**

Primary 3 Science (Term 2) 0 pts

The pictures below show an angelfish and a crocodile.



**Angelfish**



**Crocodile**

What animal group do the Angelfish and Crocodile belong to?

Angelfish: \_\_\_\_\_

Crocodile: \_\_\_\_\_

---

**Question 65 of 65**

Primary 3 Science (Term 2)

0 pts

**Based on the characteristics of the animal groups that the angelfish and crocodile belong to, state two similarities between the angelfish and the crocodile.**

the previous question)

(with reference to

---